



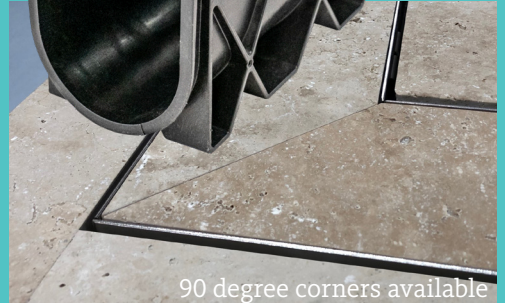
# Modular Linear Drain Cover

Outdoor Linear Drain Cover to place over EXTERIOR drainage channels.

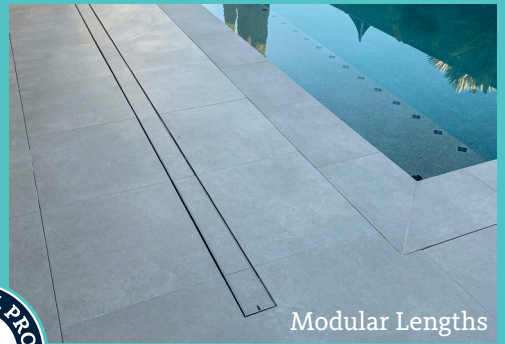
Compatible with Everhard Easy Drain, Reln Storm Drain & Storm Mate or your own custom recess.



Super discreet 316 stainless steel stone/tile drain cover for exterior stone thicknesses of 12, 20, 30 and 40mm.



90 degree corners available



Modular Lengths



## ALL NEW FEATURES

### FUNCTION AND DESIGN

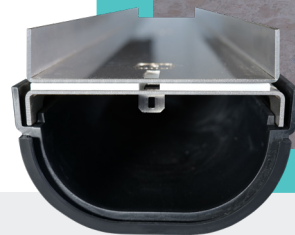
- ✓ 316 Stainless steel, strength and long-term durability.
- ✓ 2mm line of Stainless Steel at surface level; no surface deterioration.
- ✓ Installation flexibility: adjustable in height and gradient.
- ✓ No grate to collect surface sediment, making it easy to clean and remove.
- ✓ Factory cut & prefabricated 2.4m corner kits.
- ✓ Butting 1210mm modular lids to cover any length of the drainage channel.
- ✓ Select from 2 widths: compatible channels available in different depths.
- ✓ Most external stone thicknesses are compatible with the HIDE cover system.
- ✓ Centralizing TABs, and loose bridges for installation flexibility.
- ✓ Deep exterior channel that will reduce fall requirements.



Learn more, tips & more!



Installation Guide Video



### HEAD OFFICE

26 Link Drive, Yatala, Qld, 4207

P: +61 7 3807 2551 (Office)

E: admin@skimmerlids.com.au

W: www.skimmerlids.com.au

PROUDLY MANUFACTURED BY:

SKIMMER LIDS PTY LTD

[f](#) [p](#) [i](#) [h](#) @hideskimmerlids



Patents: AUST, UK, NZ available: [www.skimmerlids.com.au](http://www.skimmerlids.com.au)  
USA/Canada: [www.skimmercovers.com](http://www.skimmercovers.com) (under technical tab)



TEC-LIN-TILE V1-2024



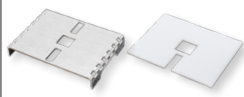
# MODULAR EXTERNAL LINEAR DRAIN COVERS



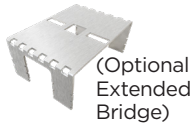
EXTERNAL  
MARINE GRADE

## SELECT FROM 3 INLAY THICKNESSES 12, 20, 30 & 40mm KITS

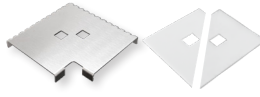
(Drain channel not supplied) 40mm depth available for Concrete Wet-Pour or Pavers  
Everhard Channel (ED) 125mm or Reln Drain or Stormmate Channel (SM) 110mm wide



Linear Bridge & Leveler



(Optional  
Extended  
Bridge)



Corner Bridge & Leveler



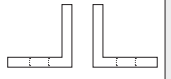
Key & Cutting Disk



End Cap Set



Adhesive



Trim

## LINEAR LID KIT

2 widths (125mm ED) & (110mm SM)

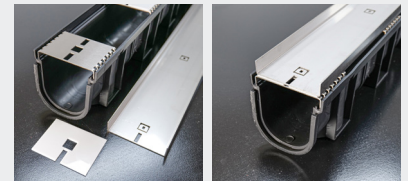
**1210mm** straight modular lengths

KIT	INLAY THICKNESS	PRODUCT CODE
10	8-12	HDCL1210-10 (ED or SM)
20	15-22	HDCL1210-20 (ED or SM)
30	25-32	HDCL1210-30 (ED or SM)
40	35-42	HDCL1210-40 (ED)



- 1 x linear lid
- 5 x linear bridges & levelers
- 2 x adhesive

• Available on request: Extended bridges. Adds 30mm height & cut down as required.

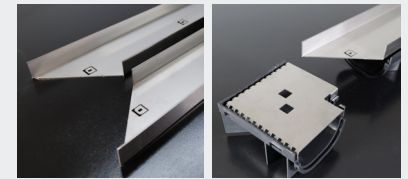


## MITRED CORNER KIT 2 x mitred 1210mm modular lengths

**2420mm**

KIT	INLAY THICKNESS	PRODUCT CODE
10	8-12	HDCLCNR1210-10 (ED or SM)
20	15-22	HDCLCNR1210-20 (ED or SM)
30	25-32	HDCLCNR1210-30 (ED or SM)

- 1 x left hand mitred corner lids
- 1 x right hand mitred corner lid
- 8 x linear bridges & levelers
- 1 x corner bridge & leveler
- 4 x adhesive



## FINISHING KIT

KIT	PRODUCT CODE
10	HDCLF-10 (ED or SM)
20	HDCLF-20 (ED or SM)
30	HDCLF-30 (ED or SM)
40	HDCLF-40 (ED)

- 2 x end caps
- 1 x access key
- 1 x stainless steel cutting disk

*This kit is required (one per install) and provides basic accessories including the access key. Additional end caps can be purchased (see below).*



## END CAPS

KIT	PRODUCT CODE
10	HDCLEC-10 (ED or SM)
20	HDCLEC-20 (ED or SM)
30	HDCLEC-30 (ED or SM)
40	HDCLEC-40 (ED)

Additional end caps if adding to each 1210mm length (Sets of 2)

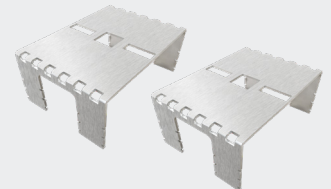
*End Caps may be added to finish the outer ends of the entire job, or to finish off each 1210mm modular length. Dependent only on your finishing preference.*



## EXTENDED BRIDGES (Optional) 50mm high bridges (Packs of 5)

KIT	PRODUCT CODE
x5	HDCLEXBR1210-ED
x5	HDCLEXBR1210-SM

*Each section of the HIDE® 1210 drain cover has five identical 20mm high bridges supporting the HIDE Cover. When extra height is required, 50mm high bridges can be purchased and cut down to required height. Packs of 5.*



## TILE EDGE TRIM (Optional)

**1210mm** Edge Protector finish

TRIM KIT	PRODUCT CODE
10	HDCLT1210-10
20	HDCLT1210-20
30	HDCLT1210-30

2 x 1210mm trim, to suit either 12, 20, 30mm Lid  
Generic to either (ED or SM)

