



POLYMER KITS WORLD FIRST

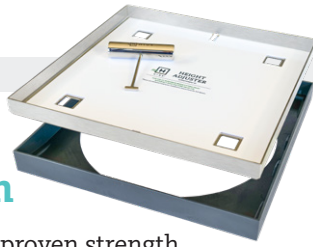
NON CONDUCTIVE POLYMER
NO EARTHING REQUIRED



HIDE RANGE

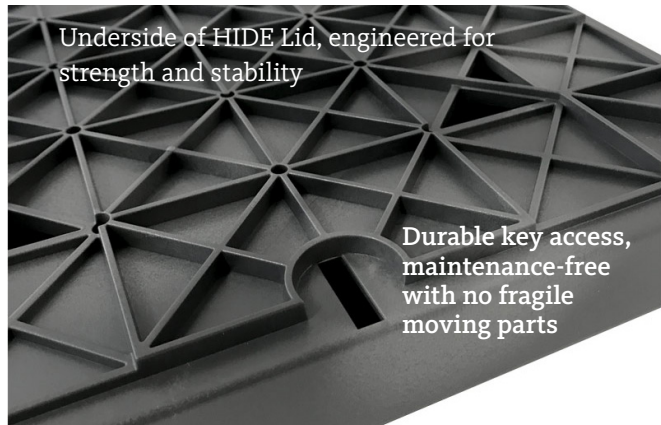
BOND FREE

Stainless Steel / Polymer Combination



HIDE 'Combination Kits' utilise the proven strength and robust properties of the HIDE® stainless steel lid combined with a Polymer Edge Protector. The Polymer Edge Protector insulates the stainless steel and therefore does not require earthing, and the polymer colour blends in with surrounding tiles.

- ✔ Simple inlay fabrication with full stone coverage
- ✔ Discrete key access with no moving parts
- ✔ Inconspicuous locking system
- ✔ HIDE's proven keyway safety access
- ✔ Ash, Bone & Charcoal colour options to match tiles
- ✔ Polymer is available in 20mm & 30mm depths.
- ✔ 20-year warranty stainless /5-year warranty polymer
- ✔ Conforms to Pool Safety Standards
- ✔ Cannot be lifted without the safety key



Underside of HIDE Lid, engineered for strength and stability

Durable key access, maintenance-free with no fragile moving parts

Full Polymer Kits

HIDE 'Polymer Kits' consist of a polymer Lid and Edge Protector. Polymer Edge Protector will suit installations where bonding (earthing) is unachievable.

- ✔ All the benefits listed above
- ✔ Polymer products have a 5-year warranty



Stone on-site installation

316 Stainless Steel Lid / Polymer Edge Protector

Charcoal Polymer Edge Protector 20 & 30mm

Bone Polymer Edge Protector 20 & 30mm

Ash Polymer Edge Protector 20 & 30mm

Safety Key
Child resistant access



HEAD OFFICE
26 Link Drive,
Yatala, Qld, 4207

P: 07 3807 2551
M: 0427 270 560
E: admin@skimmerlids.com.au
W: www.skimmerlids.com.au

@hideskimmerlids



HIDE® Skimmer Lids conform to Australian Safety Standards



Non conductive polymer
No earthing required



PROUDLY MANUFACTURED BY:
SKIMMER LIDS
PTY LTD

STAINLESS STEEL / POLYMER KITS

STAINLESS STEEL SKIMMER LID & POLYMER EDGE PROTECTOR

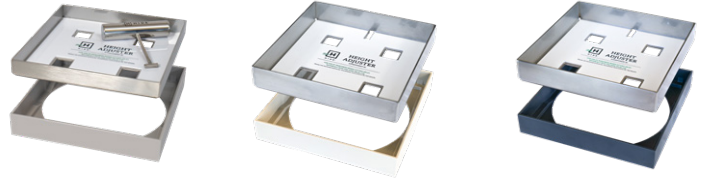
342 SKIMMER LID KIT

INLAY THICKNESS	POLYMER COLOUR	PRODUCT CODE
15-22mm	ASH	HSSP342-20AS
	BONE	HSSP342-20BN
	CHARCOAL	HSSP342-20CH
25-32mm	ASH	HSSP342-30AS
	BONE	HSSP342-30BN
	CHARCOAL	HSSP342-30CH



206 ACCESS COVER KIT

INLAY THICKNESS	POLYMER COLOUR	PRODUCT CODE
15-22mm	ASH	HSSP206-20AS
	BONE	HSSP206-20BN
	CHARCOAL	HSSP206-20CH
25-32mm	ASH	HSSP206-30AS
	BONE	HSSP206-30BN
	CHARCOAL	HSSP206-30CH



BUNDLE AND SAVE

342 SKIMMER & 206 ACCESS

INLAY THICKNESS	POLYMER COLOUR	PRODUCT CODE
15-22mm	ASH	HSSP342/206-20AS
	BONE	HSSP342/206-20BN
	CHARCOAL	HSSP342/206-20CH
25-32mm	ASH	HSSP342/206-30AS
	BONE	HSSP342/206-30BN
	CHARCOAL	HSSP342/206-30CH



Tip: Bundle your **342 Skimmer Lid** with the **206 Access Cover** for a consistent finish. The 206 size will cover ground water inspection pipes in style. This package is priced to inspire.

FULL POLYMER KITS

POLYMER SKIMMER LID & POLYMER EDGE PROTECTOR

342 SKIMMER LID KIT

INLAY THICKNESS	POLYMER COLOUR	PRODUCT CODE
15-22mm	ASH	HPSL342-20AS
	BONE	HPSL342-20BN
	CHARCOAL	HPSL342-20CH
25-32mm	ASH	HPSL342-30AS
	BONE	HPSL342-30BN
	CHARCOAL	HPSL342-30CH



206 ACCESS COVER KIT

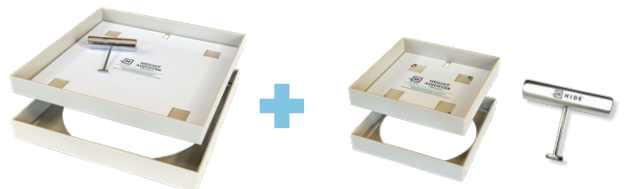
INLAY THICKNESS	POLYMER COLOUR	PRODUCT CODE
15-22mm	ASH	HPAC206-20AS
	BONE	HPAC206-20BN
	CHARCOAL	HPAC206-20CH
25-32mm	ASH	HPAC206-30AS
	BONE	HPAC206-30BN
	CHARCOAL	HPAC206-30CH



BUNDLE AND SAVE

342 SKIMMER & 206 ACCESS

INLAY THICKNESS	POLYMER COLOUR	PRODUCT CODE
15-22mm	ASH	HP342/206-20AS
	BONE	HP342/206-20BN
	CHARCOAL	HP342/206-20CH
25-32mm	ASH	HP342/206-30AS
	BONE	HP342/206-30BN
	CHARCOAL	HP342/206-30CH



Bundles are available in all three colours and both combinations. Bundled together in one box it's too good to pass up.