



# HIDE<sup>®</sup>

## Exterior Covers

SAFE. SEAMLESS. STUNNING.

# Concrete Covers



**LINEAR DRAINS**



**SKIMMER LIDS**



**ACCESS COVERS**



**DRAIN COVERS**



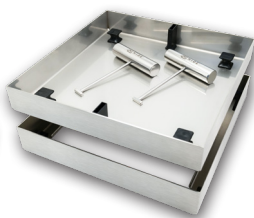
**SAFE.  
SEAMLESS.  
STUNNING.**



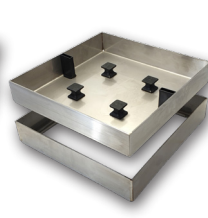
**LINEAR DRAINS**



**CONCRETE COLLAR**



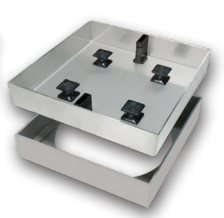
**CONCRETE SKIMMER LID**



**CONCRETE ACCESS COVER**



**POLYMER CONCRETE SKIMMER LID**



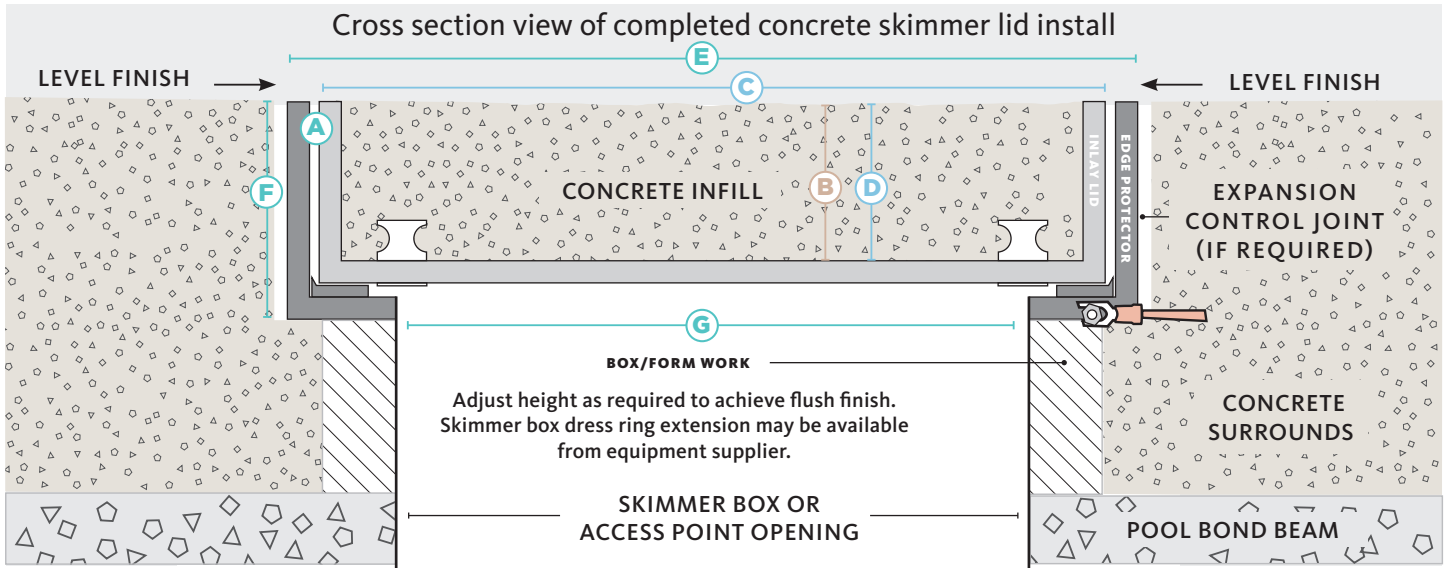
**POLYMER CONCRETE ACCESS COVER**





# HIDE KIT SERIES

## SKIMMER LIDS, ACCESS COVERS & DRAIN COVERS CONCRETE INFILL



### ACCESS COVERS Concrete Infill Range (Two Keys and Horizontal Lift)

KIT SIZE mm	HIDE KIT PRODUCT ORDER CODE	CONCRETE THICKNESS mm	INLAY LID		EDGE PROTECTOR FRAME		
			SIZE mm	INTERNAL DEPTH mm	SIZE mm	EXTERNAL DEPTH mm	UNDERSIDE OPENING mm
	<b>A</b>	<b>B</b>	<b>C</b>	<b>D</b>	<b>E</b>	<b>F</b>	<b>G</b>
156	HCON156-40	43	150 sq.	43	156 sq.	53	122 sq.
206	HCON206-40		196 sq.		206 sq.		162 sq.
256	HCON256-40		250 sq.		256 sq.		222 sq.

### SKIMMER LID or ACCESS COVER Concrete Infill Range

306	HCON306-40	43	300 sq.	43	306 sq.	53	252 sq.
342	HCON342-40		336 sq.		342 sq.		288 sq.

### SKIMMER LIDS with easy form Concrete Collar option (see reverse for details)

306	HCONC306-240-40	43	300 sq.	43	306 sq.	53	240 round
	HCONC306-270-40						270 round

### COMBINATION POLYMER SKIMMER LID or ACCESS COVER Concrete Infill Range

206	HCONSSP206-40AS	43	196 sq.	43	206 sq.	53	162 sq.
342	HCONSSP342-40AS		336 sq.		342 sq.		288 sq.

### DRAIN COVERS Concrete Infill Range (Fit over a \*suited pit or mortar regression)

314	HDCON314-40	43	300 sq.	43	314 sq.	53	260 sq.
342	HDCON342-40		328 sq.		342 sq.		288 sq.

\*342 DRAIN (Compatible with Everhard Series 300 Pit - Pit not included)

### CONCRETE LINEAR DRAIN COVERS 1000mm straight modular lengths

KIT SIZE	PRODUCT CODE	CONCRETE THICKNESS
1000	HCONDCL1000 - 40ED	43
1000	HCONDCLFK1000 - 40ED	43

HIDE products are recommended for use in pedestrian traffic areas only.

Information correct at time of printing, changes may be made without notice. Modifications and updates can be viewed on our website - [www.skimmerlids.com.au](http://www.skimmerlids.com.au)