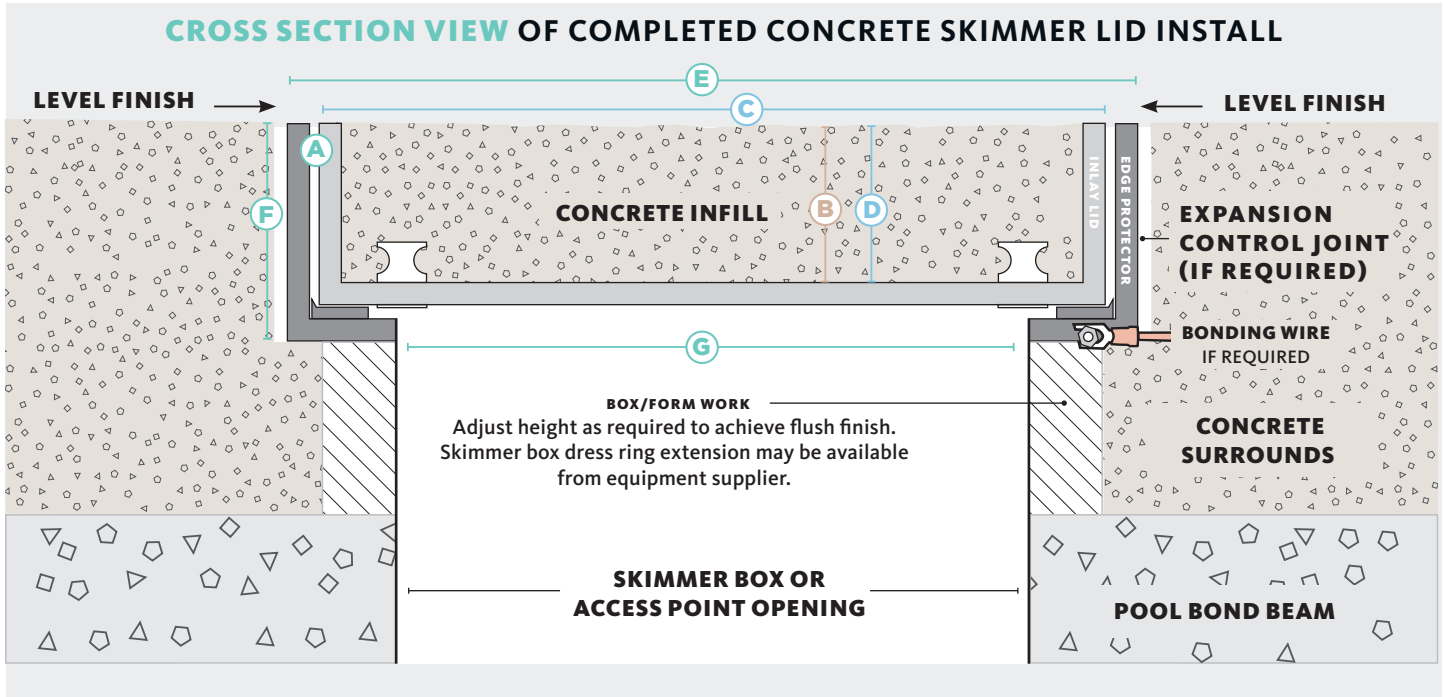




HIDE KIT SERIES

SKIMMER LID AND ACCESS COVERS CONCRETE INFILL



CONCRETE Infill Range (Two Keys and Horizontal Lift)

KIT SIZE mm	HIDE KIT PRODUCT ORDER CODE	CONCRETE THICKNESS			INLAY LID		EDGE PROTECTOR FRAME		
		mm	cm	INCH	SIZE	INTERNAL DEPTH	SIZE	EXTERNAL DEPTH	UNDERSIDE OPENING

CONCRETE COVER KIT

	A	B			C	D	E	F	G
6"	HCON6-1.6	42	4	1 5/8"	5 7/8" sq.	1 5/8"	6"	2"	4 3/4" sq.
8"	HCON8-1.6				7 3/4" sq.		8"		6 3/8" sq.
10"	HCON10-1.6				9 3/4" sq.		10"		8" sq.
12"	HCON12-1.6				11 3/4" sq.		12"		10" sq.

DRAIN COVER CONCRETE WET-POUR

12.5"	HDCON12.5-1.6	42	4	1 5/8"	12" sq.	1 5/8"	12 1/4" sq.	2"	8 2/3" sq.
-------	---------------	----	---	--------	---------	--------	-------------	----	------------

A size for most external applications

HIDE PRODUCTS INCLUDE



SKIMMER BOX COVERS



CONCRETE WET-POUR



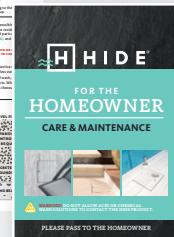
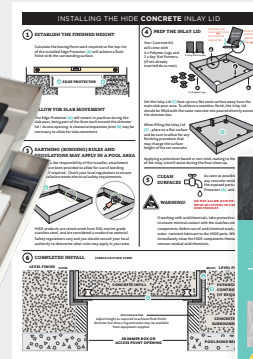
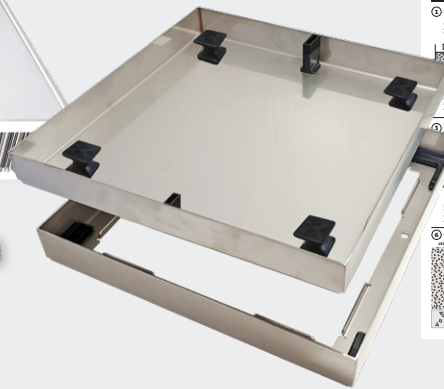
ACCESS COVERS



DRAIN COVERS

HIDE products are recommended for use in pedestrian traffic areas only.

Information correct at time of printing, changes may be made without notice. Modifications and updates can be viewed on our website - www.skimmercovers.com



HIDE CONCRETE COVER KIT INCLUDES

SAFETY KEYS

A 316L marine grade stainless steel tool, to enable the installed HIDE cover to be safely and easily opened and closed.

INLAY LID

A 316L marine grade stainless steel tray which holds the concrete, which is poured directly into the lid.

EDGE PROTECTOR

A 316L marine grade stainless steel frame inserted into a recess within the landscaped area. It protects the coping/surrounds from chipping/breakage when the Inlay Lid is opened/closed.

DOCUMENTATION

Documents consist of comprehensive contractor installation instructions, homeowners manual and warranty.



Worlds only fully customisable dual inlay system

NO ACID OR CHEMICAL WASH

ACID and chemical washes will cause discolouration and/or rusting on the stainless steel HIDE components. Acid or chemical contact will void the HIDE warranty.

Please scan and read the Care & Maintenance document to better understand stainless steel care.



CARE & MAINTENANCE



HEAD OFFICE

26 Link Drive, Yatala, Qld, 4207
 P: +61 7 3807 2551
 Toll free: 1844 500 HIDE (4433)
 E: admin@skimmerlids.com.au

NORTH AMERICA / UK / EUROPE

Sam Hazell - Sales Manager
 C: 949-942-4905
 E: sam.hazell@skimmerlids.com.au
 W: skimmercovers.com



@hideskimmerlids



Patents: AUST, UK, NZ available: www.skimmerlids.com.au USA/Canada: www.skimmercovers.com (under technical)