

Exterior Covers

SPECIFICATION DETAIL

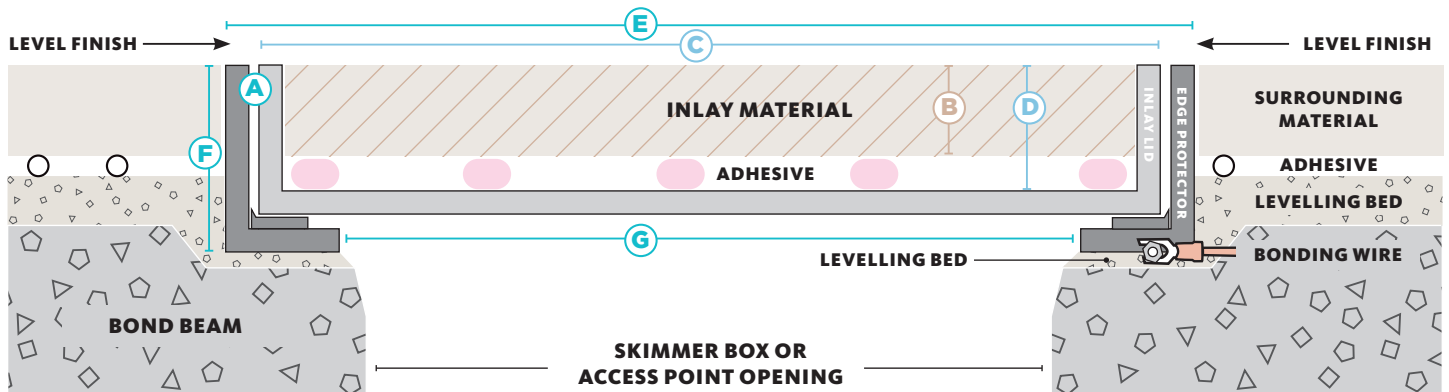


H I D E®

Skimmer Lids

316 STAINLESS STEEL RANGE

CROSS SECTION VIEW OF COMPLETED SKIMMER COVER INSTALL



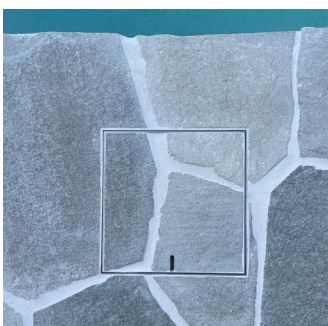
HIDE KIT PRODUCT ORDER CODE	MATERIAL THICKNESS			INLAY LID		EDGE PROTECTOR FRAME		
	mm	cm	INCH	SIZE	INTERNAL DEPTH	SIZE	EXTERNAL DEPTH	UNDERSIDE OPENING
A	B			C	D	E	F	G

12" Skimmer and Access Cover Kit

HSL12-0.4	8-11	1	3/8" - 1/2"	11 3/4" sq.	1/2"	12" sq.	7/8"	10" sq.
HSL12-0.8	15-22	2	5/8" - 7/8"		7/8"		1 1/4"	
HSL12-1.2	25-32	3	1" - 1 1/4"		1 1/4"		1 5/8"	
HSL12-1.6	35-42	4	1 3/8" - 1 5/8"		1 5/8"		2"	
HSL12-2	45-52	5	1 3/4" - 2"		2"		2 1/2"	
HSL12-2.5	55-62	6	2 1/4" - 2 1/2"		2 1/2"		3"	

Other sizes available - See Access Covers

HIDE PRODUCTS INCLUDE



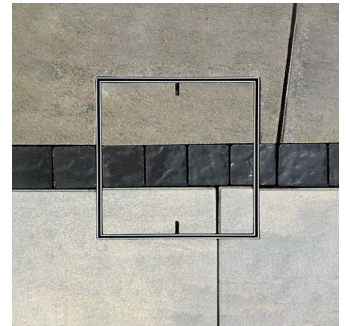
SKIMMER BOX COVERS



CONCRETE WET-POUR



ACCESS COVERS



DRAIN COVERS

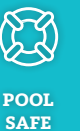
HIDE products are recommended for use in pedestrian traffic areas only.

Information correct at time of printing, changes may be made without notice. Modifications and updates can be viewed on our website - www.skimmercovers.com



HIDE KIT SERIES

SKIMMER LID



HIDE SKIMMER LID KIT INCLUDES

SAFETY KEY

A 316L marine grade stainless steel tool, to enable the installed HIDE cover to be safely and easily opened and closed.

HEIGHT ADJUSTER

Used only when additional height is required. Provides 2mm extra height if inlay material is not thick enough to achieve a flush finish with the top of the Inlay Cover.

INLAY LID

A 316L marine grade stainless steel tray which holds the inlay (landscape) materials you've chosen, for example, tile, paver, concrete or decking.

EDGE PROTECTOR

A 316L marine grade stainless steel frame inserted into a recess within the landscaped area. It protects the coping/surrounds from chipping/breakage when the Inlay Cover is opened/closed.

ADHESIVE AND DOCUMENTATION

A one-part adhesive specially developed for a long-term fitting of natural stone and porcelain tiles into the HIDE Inlay Series. Documents consist of comprehensive contractor installation instructions, homeowners warranty and manual.

NO ACID OR CHEMICAL WASH

ACID and chemical washes will cause discolouration and/or rusting on the stainless steel HIDE components. Acid or chemical contact will void the HIDE warranty.

Please scan and read the Care & Maintenance document to better understand stainless steel care.



CARE & MAINTENANCE



HEAD OFFICE

26 Link Drive, Yatala, Qld, 4207

P: +61 7 3807 2551

Toll free: 1844 500 HIDE (4433)

E: admin@skimmercovers.com



Scan to contact your local HIDE representative



@hideskimmerlids



Patents: AUST, UK, NZ available: www.skimmerlids.com.au USA/Canada: www.skimmercovers.com (under technical)