



Exterior Covers

SPECIFICATION DETAIL

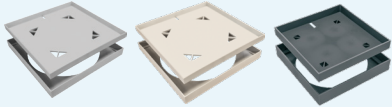
H I D E®

Polymer (Non-Conductive)

SKIMMER LIDS AND ACCESS COVERS

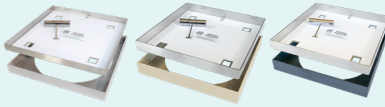
good.

Full Polymer Kits
(No earthing required)



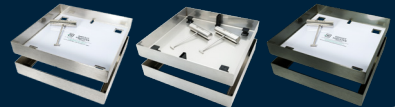
better.

Combination Kits
Robust Stainless-Steel + Polymer
(No earthing required)



best.

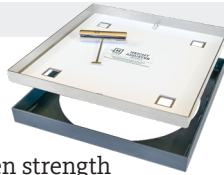
316 Stainless Steel Kits
20-Year warranty
(Earthed to pool structure)
Bespoke colours available



Stainless Steel / Polymer Combination

HIDE 'Combination Kits' utilise the proven strength and robust properties of the HIDE® stainless steel lid combined with a Polymer Edge Protector. The Polymer Edge Protector insulates the stainless steel and therefore does not require earthing, and the polymer colour blends in with surrounding tiles.

- ✓ Simple inlay fabrication with full stone coverage
- ✓ Discrete key access with no moving parts
- ✓ Inconspicuous locking system
- ✓ HIDE's proven keyway safety access
- ✓ Ash, Bone & Charcoal colour options to match tiles
- ✓ Polymer is available in 20mm & 30mm depths.
- ✓ 20-year warranty stainless / 5-year warranty polymer
- ✓ Conforms to Pool Safety Standards
- ✓ Cannot be lifted without the safety key



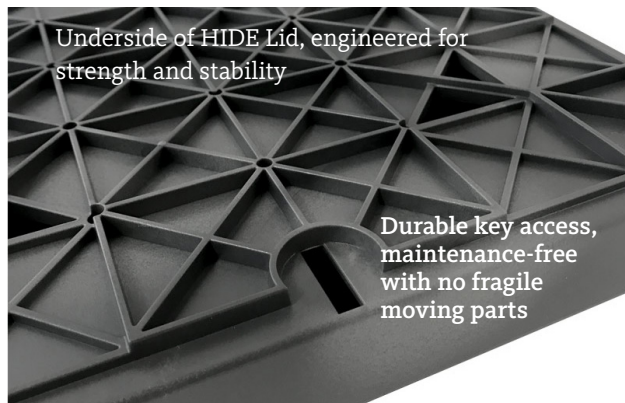
Stone on-site installation

316 Stainless Steel Lid / Polymer Edge Protector

Charcoal Polymer Edge Protector 20 & 30mm

Bone Polymer Edge Protector 20 & 30mm

Ash Polymer Edge Protector 20 & 30mm



Underside of HIDE Lid, engineered for strength and stability

Durable key access, maintenance-free with no fragile moving parts

Full Polymer Kits

HIDE 'Polymer Kits' consist of a polymer Lid and Edge Protector. Polymer Edge Protector will suit installations where bonding (earthing) is unachievable.

- ✓ All the benefits listed above
- ✓ Polymer products have a 5-year warranty



Non conductive polymer
No earthing required

Safety Key
Child resistant access



HEAD OFFICE

26 Link Drive,
Yatala, Qld, 4207

P: 07 3807 2551
E: admin@skimmerlids.com.au
W: www.skimmerlids.com.au



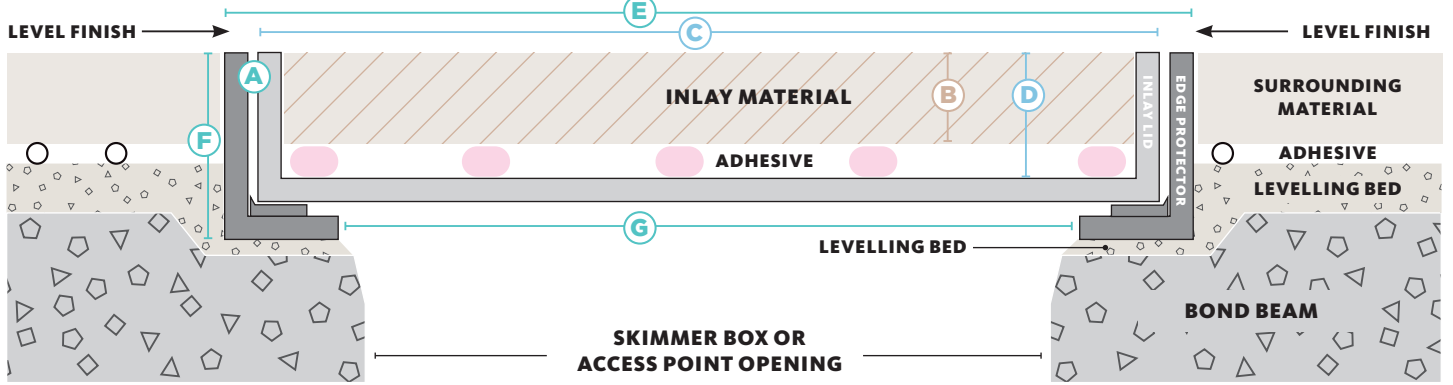
HIDE® Skimmer Lids conform to Australian Safety Standards

@hideskimmerlids



PROUDLY MANUFACTURED BY:
SKIMMER LIDS

CROSS SECTION VIEW OF COMPLETED SKIMMER LID INSTALL



HIDE KIT PRODUCT ORDER CODE	MATERIAL THICKNESS mm	INLAY LID		EDGE PROTECTOR FRAME		
		SIZE	INTERNAL DEPTH	SIZE	EXTERNAL DEPTH	UNDERSIDE OPENING
A	B	C	D	E	F	G

342mm Combination Skimmer Lid

HSSP342-20AS	15-22	336 sq.	23	342 sq.	34	300
HSSP342-20BN						
HSSP342-20CH						
HSSP342-30AS	25-32	336 sq.	33	342 sq.	44	300
HSSP342-30BN						
HSSP342-30CH						
HSSP342-40AS	35-42		43		54	

206mm Combination Access Cover

HSP206-20AS	15-22	196 sq.	23	206 sq.	34	185
HSP206-20BN						
HSP206-20CH						
HSP206-30AS	25-32	196 sq.	33	206 sq.	44	185
HSP206-30BN						
HSP206-30CH						
HSP206-40AS	35-42		43		54	

342mm Polymer Skimmer Lid

HPSL342-20AS	15-22	336 sq.	23	342 sq.	34	300
HPSL342-20BN						
HPSL342-20CH						
HPSL342-30AS	25-32	336 sq.	33	342 sq.	44	300
HPSL342-30BN						
HPSL342-30CH						

206mm Polymer Access Cover

HPAC206-20AS	15-22	196 sq.	23	206 sq.	34	185
HPAC206-20BN						
HPAC206-20CH						
HPAC206-30AS	25-32	196 sq.	33	206 sq.	44	185
HPAC206-30BN						
HPAC206-30CH						

342mm Concrete Polymer Skimmer Lid

HCONSSP342-40AS	35-42	336 sq.	43	342 sq.	54	300
-----------------	-------	---------	----	---------	----	-----

206mm Concrete Polymer Access Cover

HCONSSP206-40AS	35-42	336 sq.	43	342 sq.	54	285
-----------------	-------	---------	----	---------	----	-----

STAINLESS STEEL / POLYMER KITS

STAINLESS STEEL SKIMMER LID & POLYMER EDGE PROTECTOR

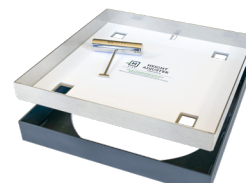
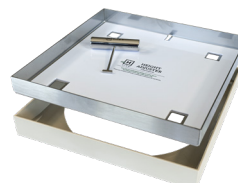
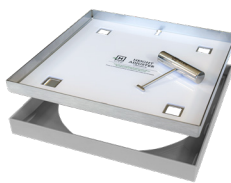
342 SKIMMER LID KIT

INLAY THICKNESS	POLYMER COLOUR	PRODUCT CODE
15-22mm	ASH	HSSP342-20AS
	BONE	HSSP342-20BN
	CHARCOAL	HSSP342-20CH
25-32mm	ASH	HSSP342-30AS
	BONE	HSSP342-30BN
	CHARCOAL	HSSP342-30CH
35-42mm	ASH	HSSP342-40AS

ASH

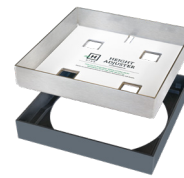
BONE

CHARCOAL



206 ACCESS COVER KIT

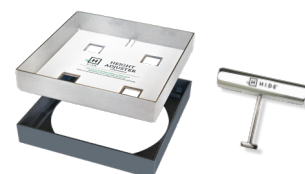
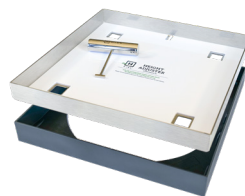
INLAY THICKNESS	POLYMER COLOUR	PRODUCT CODE
15-22mm	ASH	HSSP206-20AS
	BONE	HSSP206-20BN
	CHARCOAL	HSSP206-20CH
25-32mm	ASH	HSSP206-30AS
	BONE	HSSP206-30BN
	CHARCOAL	HSSP206-30CH
35-42mm	ASH	HSSP206-40AS



BUNDLE AND SAVE

342 SKIMMER & 206 ACCESS

INLAY THICKNESS	POLYMER COLOUR	PRODUCT CODE
15-22mm	ASH	HSSP342/206-20AS
	BONE	HSSP342/206-20BN
	CHARCOAL	HSSP342/206-20CH
25-32mm	ASH	HSSP342/206-30AS
	BONE	HSSP342/206-30BN
	CHARCOAL	HSSP342/206-30CH
35-42mm	ASH	HSSP342/206-40AS



Tip: Bundle your **342 Skimmer Lid** with the **206 Access Cover** for a consistent finish. The 206 size will cover ground water inspection pipes in style. This package is priced to inspire.

FULL POLYMER KITS

POLYMER SKIMMER LID & POLYMER EDGE PROTECTOR

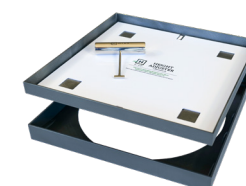
342 SKIMMER LID KIT

INLAY THICKNESS	POLYMER COLOUR	PRODUCT CODE
15-22mm	ASH	HPSL342-20AS
	BONE	HPSL342-20BN
	CHARCOAL	HPSL342-20CH
25-32mm	ASH	HPSL342-30AS
	BONE	HPSL342-30BN
	CHARCOAL	HPSL342-30CH

ASH

BONE

CHARCOAL



206 ACCESS COVER KIT

INLAY THICKNESS	POLYMER COLOUR	PRODUCT CODE
15-22mm	ASH	HPAC206-20AS
	BONE	HPAC206-20BN
	CHARCOAL	HPAC206-20CH
25-32mm	ASH	HPAC206-30AS
	BONE	HPAC206-30BN
	CHARCOAL	HPAC206-30CH



BUNDLE AND SAVE

342 SKIMMER & 206 ACCESS

INLAY THICKNESS	POLYMER COLOUR	PRODUCT CODE
15-22mm	ASH	HP342/206-20AS
	BONE	HP342/206-20BN
	CHARCOAL	HP342/206-20CH
25-32mm	ASH	HP342/206-30AS
	BONE	HP342/206-30BN
	CHARCOAL	HP342/206-30CH



Bundles are available in all three colours and both combinations. Bundled together in one box it's too good to pass up.